

# UNIVOLT PVC Tray Product guide

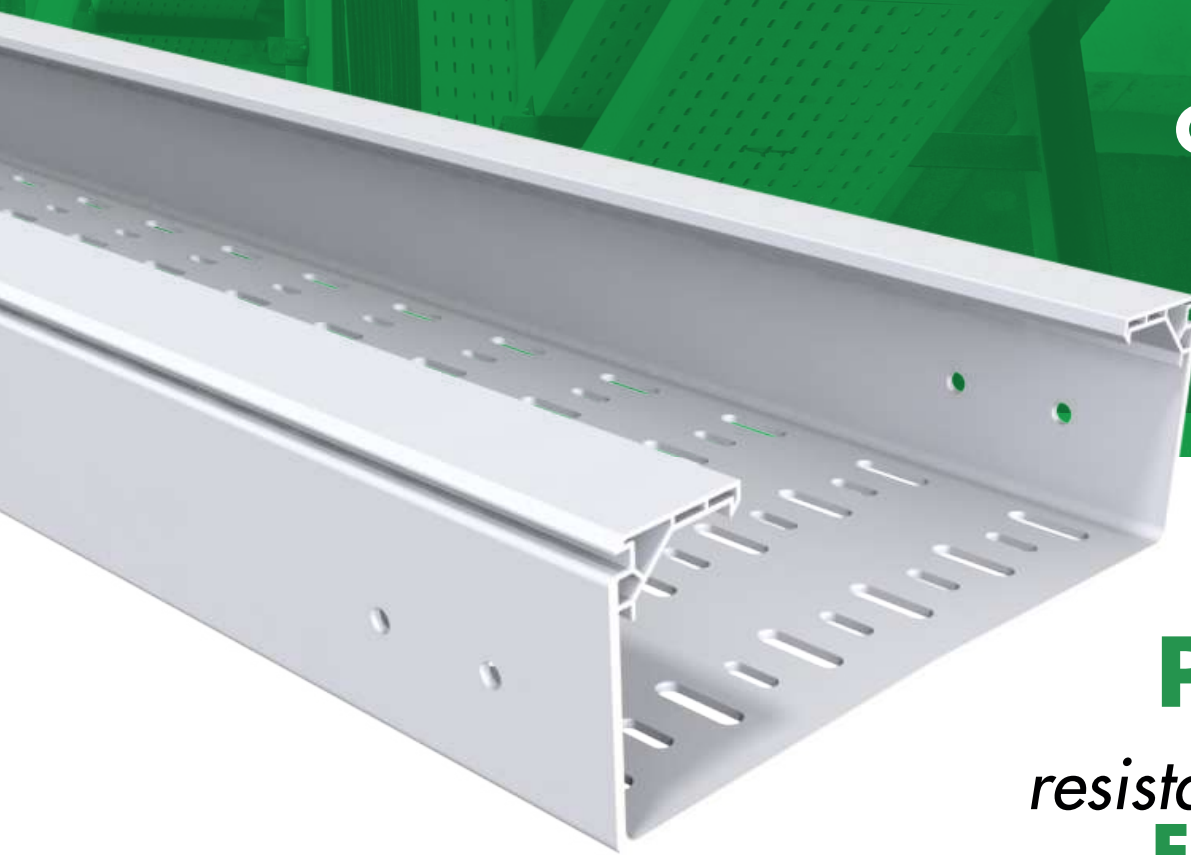
**WATER  
TREATMENT  
WORKS**

**PETROCHEMICAL  
INDUSTRY**

**RAILWAY  
INFRASTRUCTURES**

**COASTAL  
APPLICATIONS**

**CHEMICAL  
INDUSTRY**



**PVC UV**  
corrosion  
*resistant trays for*  
**EXTERNAL  
APPLICATION**



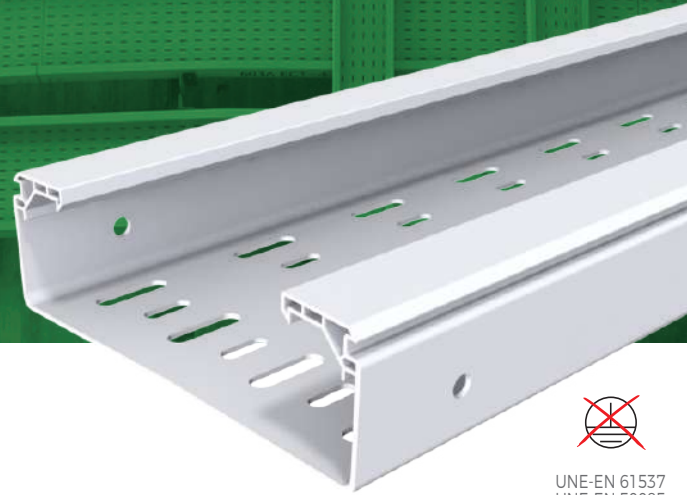
**DIETZEL**  
**UNIVOLT**

**3E Basor**  
CABLE TRAY SPECIALIST

CABLE MANAGEMENT ALLIANCE

# Basorplast BPE

## PVCM1 UV Cable Trays



### TECHNICAL DATA SHEET

#### Models (HxW):

60x100; 60x150; 60x200; 60x300; 100x200; 100x300; 100x400; 100x600.

Types: Slotted or solid bottom

Finishes PVC UVM1 RAL 7035

#### Characteristics of the tray:

- Non metallic system
- Resistant to UV radiation UL568
- Excellent behaviour in outdoor
- Impact strength: 20j except 60x100 with 10j
- Minimum temperature
- Maximum temperature
- Non-Flame propagating
- No electrical continuity
- Insulating
- Dielectric Strength
- High resistance to corrosion substances (DIN 8061 & ISO/TR 10358)
- M1 reaction to fire: UNE 23727
- Glow wire test: 1760°F (960°C) EN 60695-2-11
- Flammability: UL 94-VO, ANSI/UL 94-1995
- LOI > 50% EN ISO 4589
- Comply: RoHS 2011/65/UE
- Raw material without silicone

### INSTRUCTIONS FOR USE

**Assembly:** H60 (2 union joints + 4 bolts) H100 (2 coupler joints + 8 bolts).

**Installation:** Not allowed under other conduction system such as water, vapour or gas.

**Ventilation:** Minimum distance between each tray of 250 mm.

**Enviroments:** Wet, salty and chemical.

**Expansions:** Depending of the expected growth in the temperature (AT) leave a gap (h) between cable trays according to the following table:

Expected Temp. Growth		GAP
ΔT (°F)	ΔT (°C)	h (mm)
36	20	5
54	30	7
72	40	9
90	50	11

### SAFE WORKING LOADS: RECOMMENDATION

MODELS	IEC 61537 SWL (CTA) kg/m (lb/ft)							
	Temp. Max 40°C (104°F)				Temp. Max 60°C (140°F)			
	1 m span		1,5 m span		1 m span		1,5 m span	
	Kg/m	Lb/ft	Kg/m	Lb/ft	Kg/m	Lb/ft	Kg/m	Lb/ft
BPE-60X100	38	26	24	16	28	19	12	8
BPE-60X150	39	26	25	17	30	20	12	8
BPE-60X200	67	45	38	26	45	30	20	13
BPE-60X300	74	50	45	30	50	34	21	14
BPE-100X200	121	81	87	59	73	49	49	33
BPE-100X300	123	83	89	60	81	54	50	34
BPE-100X400	178	120	108	73	114	77	68	46
BPE-100X600	212	142	121	81	133	89	96	65

NOTE: Tests according to IEC 61537 (limited deflection) Type II test, with 1.7 Safety factor

UNE-EN 61537  
UNE-EN 50085



UNE-EN IEC 61537  
UNE-EN 50085  
UNE 23727  
UL94



UNE-EN 60695



UNE-EN 61537



UNE-EN 50085



ISO/TR 10358  
DIN 8061



IEC 60529



Mod. 60x100 10j  
UNE-EN 61537  
UNE-EN 50085



IEC 50102

## BPE-P / H60



Univolt Part Code	Description	Pack QTY
BPE60X150PVC	BPE 60X150	6 m
BPE60X200PVC	BPE 60X200	6 m
BPE60X300PVC	BPE 60X300	6 m



## COVER TBPE



Univolt Part Code	Description	Pack QTY
TBPE150/P/PVC	TBPE 150	6 m
TBPE200/P/PVC	TBPE 200	6 m
TBPE300/P/PVC	TBPE 300	6 m
TBPE400/P/PVC	TBPE 400	6 m
TBPE600/P/PVC	TBPE 600	6 m



## BPE-P / H100



Univolt Part Code	Description	Pack QTY
BPE100X300PVC	BPE 100X300	6 m
BPE100X400PVC	BPE 100X400	6 m
BPE100X600PVC	BPE 100X600	6 m



## END COVER TFBPE



Univolt Part Code	Description	Pack QTY
TFBPE60X150PVC	TFBPE 60X150	1 ea
TFBPE60X200PVC	TFBPE 60X200	1 ea
TFBPE60X300PVC	TFBPE 60X300	1 ea
TFBPE100X200PVC	TFBPE 100X200	1 ea
TFBPE100X300PVC	TFBPE 100X300	1 ea
TFBPE100X400PVC	TFBPE 100X400	1 ea
TFBPE100X600PVC	TFBPE 100X600	1 ea



## FLAT BEND 90° CPBPE



Univolt Part Code	Description	Pack QTY
CPBPE60X150PVC	CPBPE 60X150	1 ea
CPBPE60X200PVC	CPBPE 60X200	1 ea
CPBPE60X300PVC	CPBPE 60X300	1 ea
CPBPE100X200PVC	CPBPE 100X200	1 ea
CPBPE100X300PVC	CPBPE 100X300	1 ea
CPBPE100X400PVC	CPBPE 100X400	1 ea
CPBPE100X600PVC	CPBPE 100X600	1 ea



## COVER FLAT BEND TCPBPE



Univolt Part Code	Description	Pack QTY
TCPBPE150PVC	TCPBPE 150	1 ea
TCPBPE200PVC	TCPBPE 200	1 ea
TCPBPE300PVC	TCPBPE 300	1 ea
TCPBPE400PVC	TCPBPE 400	1 ea
TCPBPE600PVC	TCPBPE 600	1 ea



## INSIDE BEND CCBPE



Univolt Part Code	Description	Pack QTY
CCBPE60X150PVC	CCBPE 60X150	1 ea
CCBPE60X200PVC	CCBPE 60X200	1 ea
CCBPE60X300PVC	CCBPE 60X300	1 ea
CCBPE100X200PVC	CCBPE 100X200	1 ea
CCBPE100X300PVC	CCBPE 100X300	1 ea
CCBPE100X400PVC	CCBPE 100X400	1 ea
CCBPE100X600PVC	CCBPE 100X600	1 ea



## COVER INSIDE BEND TCCBPE



Univolt Part Code	Description	Pack QTY
TCCBPE60X150PVC	TCCBPE 60X150	1 ea
TCCBPE60X200PVC	TCCBPE 60X200	1 ea
TCCBPE60X300PVC	TCCBPE 60X300	1 ea
TCCBPE100X200PVC	TCCBPE 100X200	1 ea
TCCBPE100X300PVC	TCCBPE 100X300	1 ea
TCCBPE100X400PVC	TCCBPE 100X400	1 ea
TCCBPE100X600PVC	TCCBPE 100X600	1 ea



## OUTSIDE BEND CXBPE



Univolt Part Code	Description	Pack QTY
CXBPE60X150PVC	CXBPE 60X150	1 ea
CXBPE60X200PVC	CXBPE 60X200	1 ea
CXBPE60X300PVC	CXBPE 60X300	1 ea
CXBPE100X200PVC	CXBPE 100X200	1 ea
CXBPE100X300PVC	CXBPE 100X300	1 ea
CXBPE100X400PVC	CXBPE 100X400	1 ea
CXBPE100X600PVC	CXBPE 100X600	1 ea



## SUPPORT SHG



Univolt Part Code	Description	Pack QTY
SHG150PVC	SHG 150	1 ea
SHG200PVC	SHG 200	1 ea
SHG300PVC	SHG 300	1 ea
SHG400PVC	SHG 400	1 ea
SHG600PVC	SHG 600	1 ea

## COUPLERS & SCREWS



Univolt Part Code	Description	Pack QTY
JUBPE60PVC	JUBPE 100	10 ea
CTBP-100PVC	CTBP-100	100 ea



## BRIDLE IK BIK10



Univolt Part Code	Description	Pack QTY
BIK60X150	BIK10-BPE 60X150	10 ea
BIK60/100X200	BIK10-BPE 60/100X200	10 ea
BIK60/100X300	BIK10-BPE 60/100X300	10 ea
BIK100X400	BIK10-BPE 100X400	10 ea
BIK100x600	BIK10-BPE 100X600	10 ea



## TEE/CROSS PDBPE



Univolt Part Code	Description	Pack QTY
PDBPE100PVC	PDBPE 100	1 ea



## DIVIDER PROFILE PSBPE



Univolt Part Code	Description	Pack QTY
PSBPE100PVC	TPSBPE 100	30 m



## CABLE MANAGEMENT ALLIANCE

## COVER OUTSIDE BEND TCXBPE



Univolt Part Code	Description	Pack QTY
TCXBPE60X150PVC	TCXBPE 60X150	1 ea
TCXBPE60X200PVC	TCXBPE 60X200	1 ea
TCXBPE60X300PVC	TCXBPE 60X300	1 ea
TCXBPE100X200PVC	TCXBPE 100X200	1 ea
TCXBPE100X300PVC	TCXBPE 100X300	1 ea
TCXBPE100X400PVC	TCXBPE 100X400	1 ea
TCXBPE100X600PVC	TCXBPE 100X600	1 ea

## SUPPORT SVG



Univolt Part Code	Description	Pack QTY
SVG150PVC	SVG 150	1 ea
SVG200PVC	SVG 200	1 ea
SVG300PVC	SVG 300	1 ea
SVG400PVC	SVG 400	1 ea
SHVG600PVC	SVG 600	1 ea

## HINGED JOINTS



Univolt Part Code	Description	Pack QTY
JUBPEAB100PVC	JUBPE-AB 100	1 kit

## PROFILES AND HEAD PROFILES



Univolt Part Code	Description	Pack QTY
PSHGR600	PSHGR 600	2 ea
TFSHGRPVC	TFSHGR PVC	1 ea
KSHGR	KSHGR	1 ea
CT2M10X100	CT2 M10X100	50 ea

## Contact Univolt UK Ltd

Unit 4, Quadrant Park  
Mundells  
Welwyn Garden City  
AL7 1FS

T- 01707 379820  
W- www.univolt.co.uk  
M- sales@univolt.co.uk