

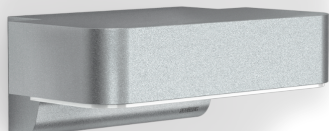
Sensor-switched LED outdoor light

L 800 S

V2 Silver

EAN 4007841 671419

Article number 671419



Downlight L 825

LED

30 years (Ø 4,5h / day)

3000 K

3000K warm-white



intelligent high frequency sensor 160°



1 - 5 m



IP44



2 - 1000 lux



5 sec - 15 min



soft light start



10% basic brightness

Function description

The most modern outdoor light in the world. Designer sensor-switched outdoor light L 800 S with invisible high-frequency sensor, ideal for building entrances and fronts of buildings, 7,5 W STEINEL LED lighting system, 466 lm, 160° coverage angle, reach from 1 - 5 m, for stylish downlighting, includes soft light start and optional manual override for 4 hours.

L 800 S

V2 Silver

EAN 4007841 671419

Article number 671419

Technical specifications

Dimensions (L x W x H)	145 x 230 x 88 mm
With lamp	Yes, LED lamp
With motion detector	Yes
Manufacturer's Warranty	3 years
Settings via	Potentiometers
With remote control	Nein
Version	Silver
PU1, EAN	4007841671419
Application, place	Outdoors
Application, room	garden, front door, courtyard & driveway, all round the building, terrace / balcony
Colour	Silver
includes sheet of self-adhesive numbers	No
Installation site	wall
Impact resistance	IK03
IP-rating	IP44
Protection class	II
Ambient temperature	-20 – 40 °C
Housing material	Aluminium
Cover material	Plastic, opal
Mains power supply	220 – 240 V / 50 – 60 Hz
Output	5 - 25 W
Mounting height max.	2,50 m
Slave modeselectable	Yes
Sneak-by guard	Yes

Capability of masking out individual segments	No
Electronic scalability	Yes
Mechanical scalability	No
Reach, radial	r = 5 m (35 m ²)
Reach, tangential	r = 5 m (35 m ²)
Photo-cell controller	Yes
Transmitter power	
Luminous flux total product	466 lm
Measured luminous flux (360°)	466 lm
Total product efficiency	62 lm/W
Colour temperature	3000 K
Lamp	LED cannot be replaced
Service life LED L70B50 (25°)	> 60000 h
Base	without
LED cooling system	Active and Passive Thermo Control
Soft light start	Yes
Continuous light	selectable, 4h
Functions	Motions sensor
Twilight setting	2 – 2000 lx
Time setting	5 s – 15 Min.
Basic light level function	Yes
Basic light level function time	10/30 min, all night
Interconnection	No

Sensor-switched LED outdoor light

L 800 S

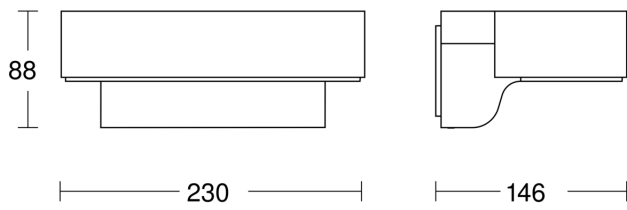
V2 Silver

EAN 4007841 671419

Article number 671419



Dimension Drawing



Circuit diagram

